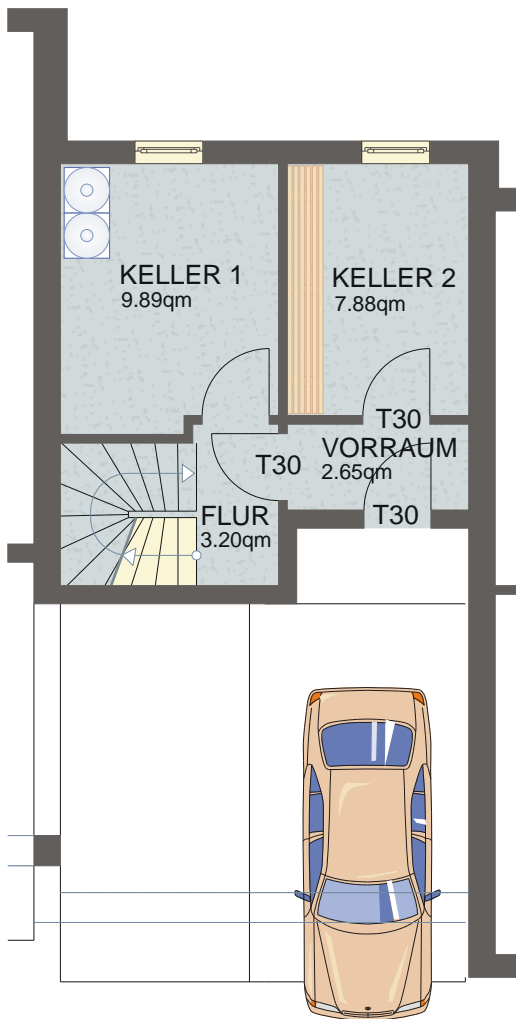
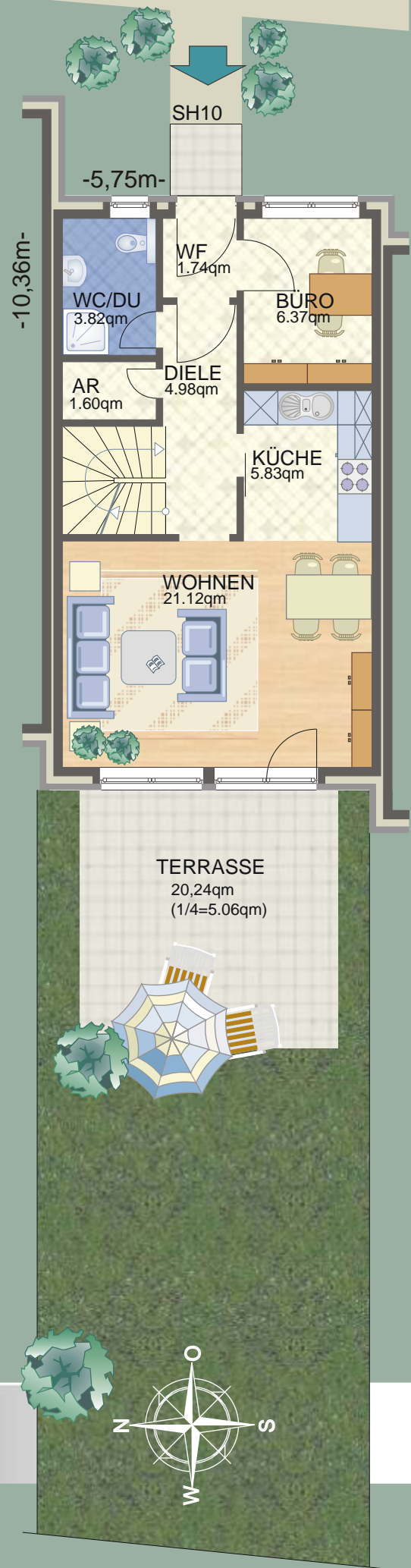


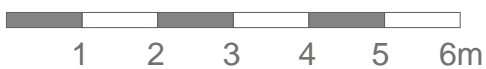
KELLERGECHOSS



ERDGESCHOSS

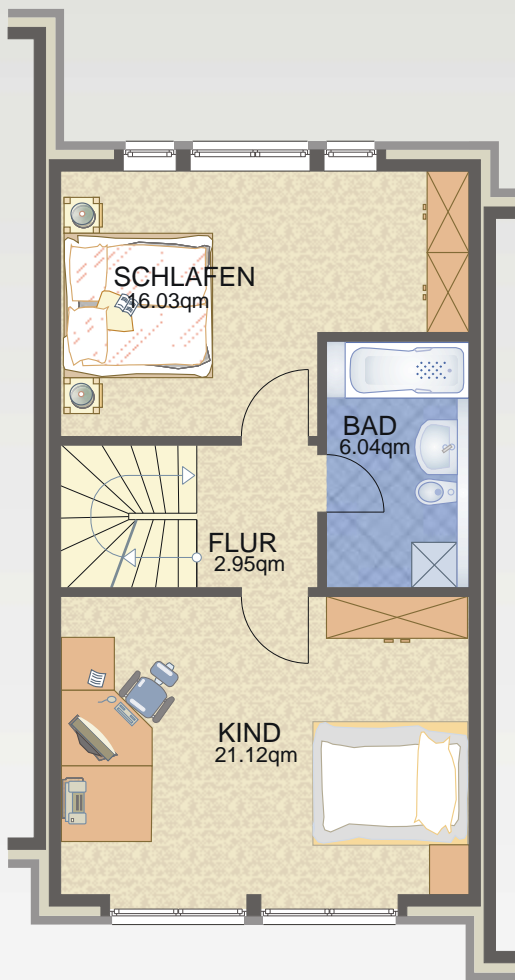
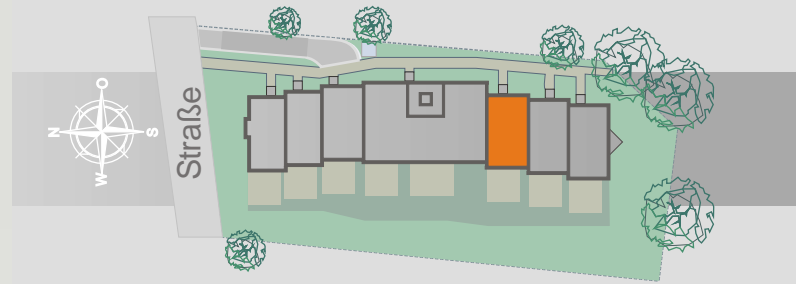


Stadthaus 10



OBERGESCHOSS

WOHNANLAGE AM VON-EICKEN-PARK IN HAMBURG



Wohnfläche EG

Windfang	1,74 qm
WC/Dusche	3,82 qm
Büro	6,37 qm
Küche	5,83 qm
Diele	4,98 qm
AR	1,60 qm
Wohnen	21,12 qm
Terrasse 20,24qm(1/4)	5,06 qm
Summe:	50,52 qm

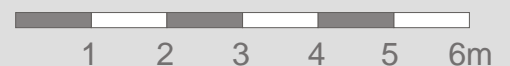
Wohnfläche OG

Flur	2,95 qm
Bad	6,04 qm
Kind 1	21,12 qm
Schlafen	16,03 qm
Summe:	46,14 qm
Summe Wohnfläche:	96,66 qm

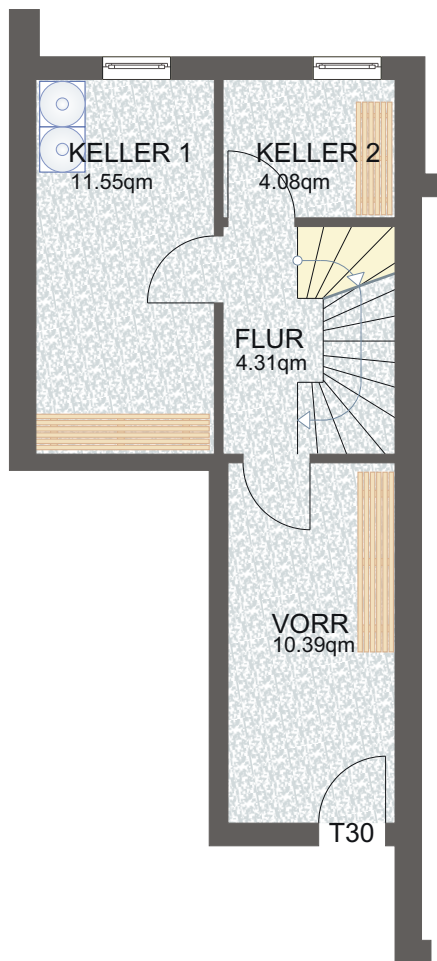
Nutzfläche KG

Flur	3,20 qm
Keller 1	9,89 qm
Keller 2	7,88 qm
Vorraum	2,65 qm
Summe:	23,62 qm

Stadthaus 10



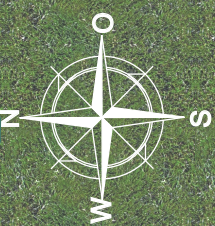
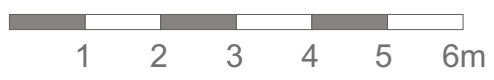
KELLERGEOSCHOSS



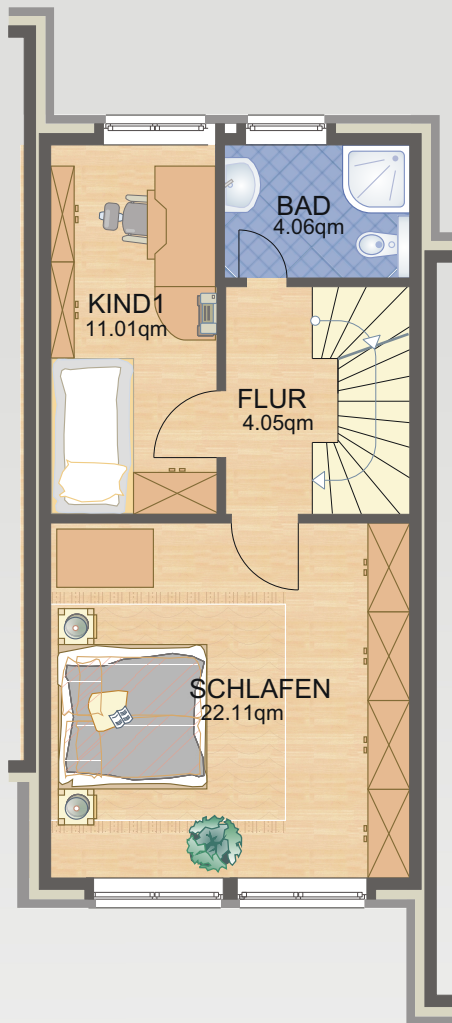
ERDGESCHOSS



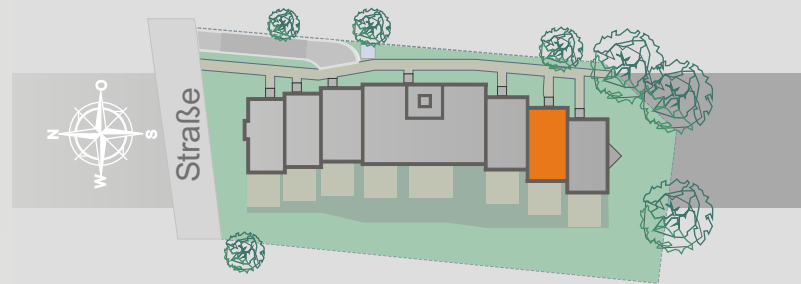
Stadthaus 11



OBERGESCHOSS



WOHNANLAGE AM VON-EICKEN-PARK IN HAMBURG



Wohnfläche EG

Windfang	2,31 qm
WC	1,87 qm
Küche	6,94 qm
Diele	4,30 qm
Wohnen	25,67 qm
Terrasse (1/4)	5,06 qm
Summe:	46,15 qm

Wohnfläche OG

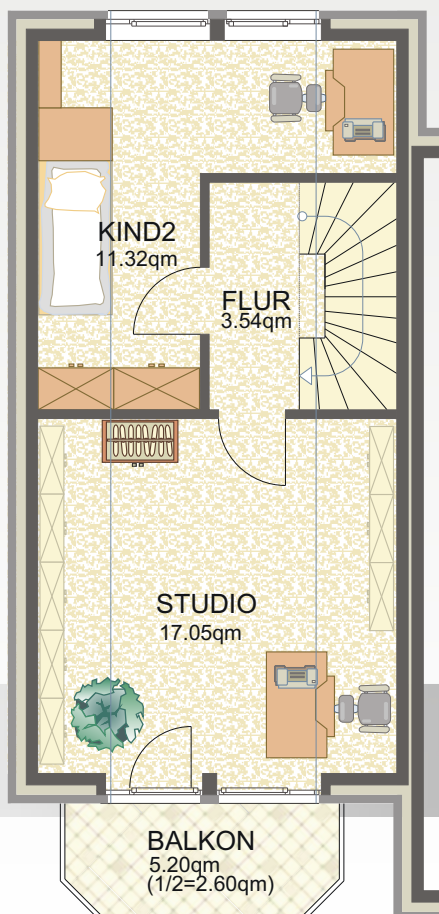
Flur	4,05 qm
Bad	4,06 qm
Kind 1	11,01 qm
Schlafen	22,11 qm
Summe:	41,23 qm

Wohnfläche DG

Flur	3,54 qm
Kind 2	11,32 qm
Studio	17,05 qm
Balkon (1/2)	2,60 qm
Summe:	34,51 qm

Summe Wohnfläche: **121,89 qm**

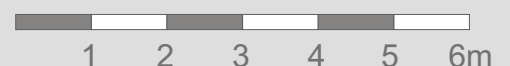
DACHGESCHOSS



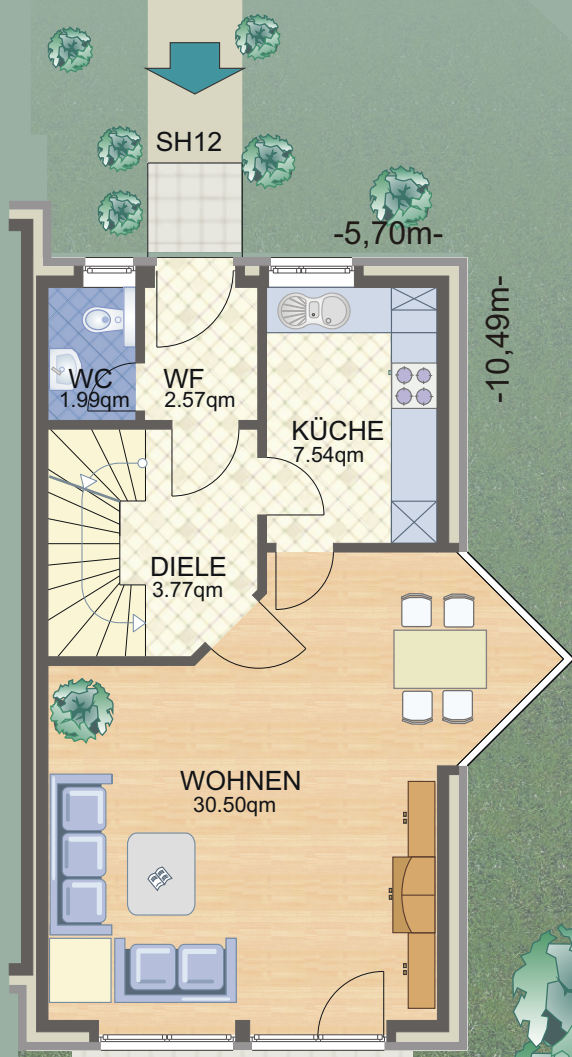
Nutzfläche KG

Vorraum	10,39 qm
Flur	4,31 qm
Keller 1	11,55 qm
Keller 2	4,08 qm
Summe:	30,33 qm

Stadthaus 11

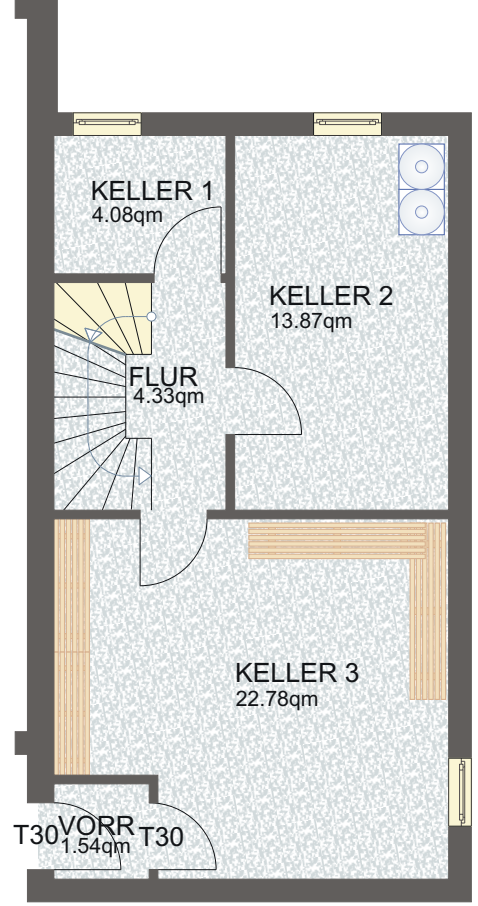


ERDGESCHOSS



TERRASSE
20,24qm
(1/4=5.06qm)

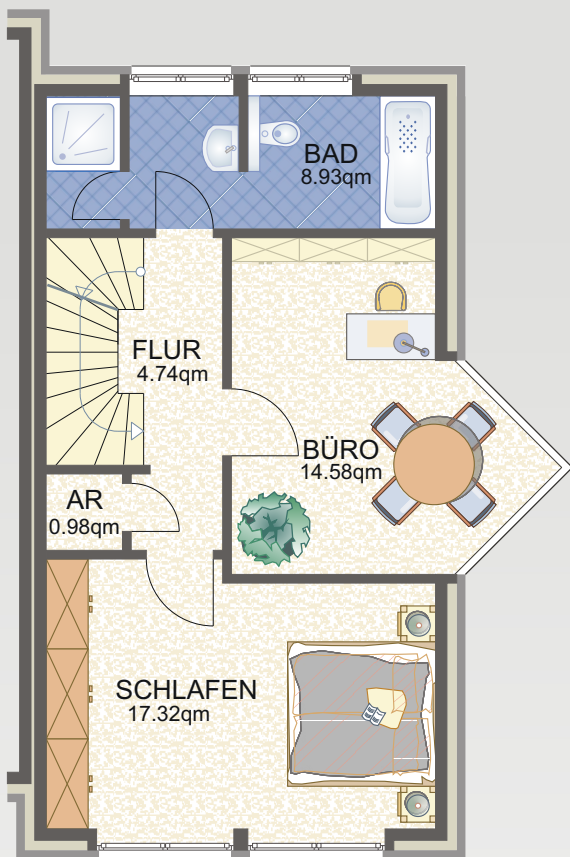
KELLERGESCHOSS



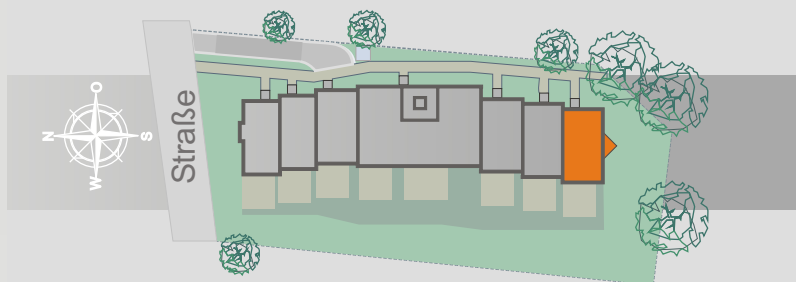
Stadthaus 12



OBERGESCHOSS



WOHNANLAGE AM VON-EICKEN-PARK IN HAMBURG



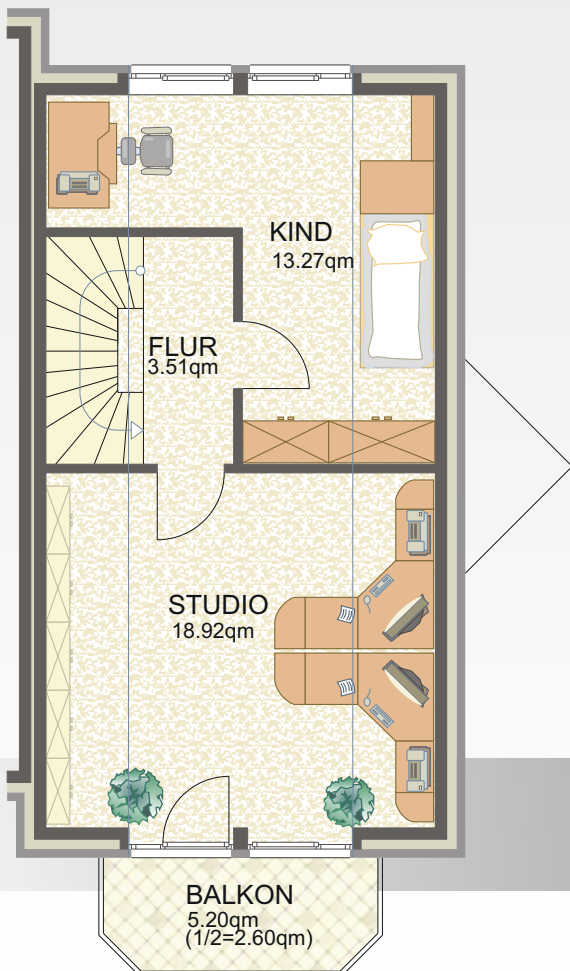
Wohnfläche EG

Windfang	2,57 qm
WC	1,99 qm
Küche	7,54 qm
Wohnen	30,50 qm
Diele	3,77 qm
Terrasse (1/4)	5,06 qm
Summe:	51,43 qm

Wohnfläche OG

Flur	4,74 qm
Bad	8,93 qm
Büro	14,58 qm
AR	0,98 qm
Schlafen	17,32 qm
Summe:	46,55 qm

DACHGESCHOSS



Wohnfläche DG

Flur	3,51 qm
Kind	13,27 qm
Studio	18,92 qm
Balkon (1/2)	2,60 qm
Summe:	38,30 qm

Summe Wohnfläche: 136,28 qm

Nutzfläche KG

Flur	4,33 qm
Keller 1	4,08 qm
Keller 2	13,87 qm
Keller 3	22,78 qm
Vorraum	1,54 qm
Summe:	46,60 qm

Stadthaus 12

